



**vtech®**

# Quick Start Guide



**Kidizoom®**  
**Duo** **FX**

By reducing the quantity of paper used for our manuals, we aim to reduce our environmental impact and contribute to the preservation of the environment. The full version of the manual is available online through the following links or by scanning the QR code.



For UK

**[vtech.co.uk/manuals](http://vtech.co.uk/manuals)**



For AUS/NZ

**[vtech.com.au/support/product\\_manuals](http://vtech.com.au/support/product_manuals)**

# INCLUDED IN THIS PACKAGE

- **KidiZoom® Duo FX**
- USB cable (for data transfer only)
- Wrist strap
- Quick Start Guide



## WARNING:

All packing materials such as tape, plastic sheets, packaging locks, removable tags, cable ties, cords and packaging screws are not part of this toy and should be discarded for your child's safety.

## NOTE:

Please keep this Quick Start Guide as it contains important information.

The metallic coated parts of **KidiZoom® Duo FX** are insulating.

This toy is only to be connected to equipment bearing either of the following symbols:  or 

## OTHER NOTES

Electrostatic discharge or an “electrical fast transient/burst” may cause the device to malfunction. If this happens, press **On/Off Button** for 2 seconds, then wait for 10 seconds and press the **On/Off Button** again to restart the camera.

# PRODUCT SPECIFICATIONS

Display	2.4" TFT colour LCD
Photo Resolution	<p><b>Front Camera</b> 3264 X 2448 (8MP) / 2560 X 1920 (5MP) for regular photos 1600 x 1200 (2MP) / 640 x 480 (0.3MP) for photos with a camera effect</p> <p><b>Rear Selfie Camera</b> 1600 x 1200 (2MP) / 640 x 480 (0.3MP)</p> <p><b>Note:</b> Resolution adjustment is found in Settings. 8MP is interpolated from 5MP sensor resolution.</p>

Video Resolution	320 x 240 640 x 480 when taking video without effects using a microSD card
Video Length limit per file	10 minutes when using a microSD card (5 minutes when using internal memory)
Digital Zoom	4X
Focus Range	1.5 feet (0.5m) - $\infty$
Flash Range	3 - 9 feet (1 - 3m)
Internal Memory	256MB built-in memory (shared with program data; actual memory available for user storage will be less)
File Format	Photos: Standard Baseline JPEG Videos: AVI (Motion JPEG)
Music Player supported format	MP3: MPEG Audio Layer III WAV: PCM or ADPCM up to 44kHz (memory card required, not included)
Memory Card Format and Capacity	microSD / microSDHC card (not included) with capacity from 1 GB to 32 GB and FAT or FAT32 format
Connectivity	USB 2.0 cable included for data transfer to and from computer
Optimal Operating Temperature	32-104°F (0-40°C)

# INSTRUCTIONS

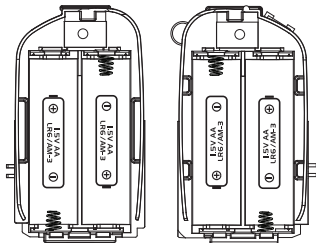
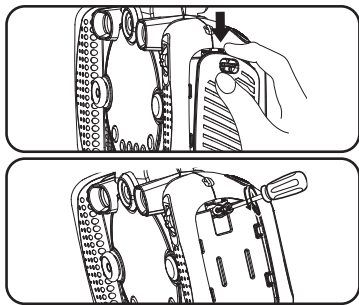
## BATTERY REMOVAL AND INSTALLATION

1. Make sure the unit is turned **OFF**.
2. Locate the battery covers on the handles of the unit. Use a screwdriver to loosen the screws and then open the battery covers.
3. If used batteries are present, remove these batteries from the unit by pulling up on one end of each battery.
4. Install 4 new 1.5V AA(LR6) batteries (2 on each side) following the diagram inside the battery box. (For best performance, alkaline batteries or fully charged Ni-MH rechargeable batteries are recommended).
5. Replace the battery covers and tighten the screws to secure.

### WARNING:

Adult assembly required for battery installation.

Keep batteries out of reach of children.



## IMPORTANT: BATTERY INFORMATION

- Insert batteries with the correct polarity (+ and -).
- Do not mix old and new batteries.
- Do not mix alkaline, standard (carbon-zinc) or rechargeable batteries.
- Only batteries of the same or equivalent type as recommended are to be used.
- Do not short-circuit the supply terminals.

- Remove batteries during long periods of non-use.
- Remove exhausted batteries from the toy.
- Dispose of batteries safely. Do not dispose of batteries in fire.

### **RECHARGEABLE BATTERIES:**

- Rechargeable batteries are only to be charged under adult supervision.
- Do not charge non-rechargeable batteries.

### **Disposal of batteries and product**



The crossed-out wheellie bin symbols on products and batteries, or on their respective packaging, indicates they must not be disposed of in domestic waste as they contain substances that can be damaging to the environment and human health.



The chemical symbols Hg, Cd or Pb, where marked, indicate that the battery contains more than the specified value of mercury (Hg), cadmium (Cd) or lead (Pb) set out in the Batteries and Accumulators Regulation.

The solid bar indicates that the product was placed on the market after 13th August, 2005.

Please dispose of your product and batteries responsibly.

In the UK, give this toy a second life by disposing of it at a small electricals collection point\* so all of its materials can be recycled.

Learn more at:

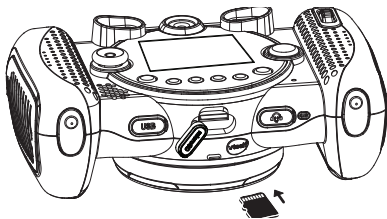
[www.vtech.co.uk/recycle](http://www.vtech.co.uk/recycle)

[www.vtech.com.au/sustainability](http://www.vtech.com.au/sustainability)

\* Visit [www.recyclenow.com](http://www.recyclenow.com) to see a list of collection points near you.

## MEMORY CARD INSTALLATION

- **KidiZoom® Duo FX** is compatible with microSD/microSDHC memory cards up to 32GB (memory cards sold separately).
- Make sure the camera is turned **Off**.
- Locate the **microSD Card Slot** at the bottom of the camera.
- Pull up the rubber cover.
- Insert the memory card as illustrated.
- Once the memory card is detected, it will be used as the default memory source of the camera.
- To remove the memory card from the slot, push the card once and it will eject.



**NOTE:** If a memory card is being used, data stored in the internal memory cannot be accessed by the camera unless the memory card is removed. To prevent accidental data loss, make sure to back up all important data from your memory card before using it in the camera.

## TO BEGIN USING KIDIZOOM® DUO FX

- Press the **On/Off** button to turn the camera on.
- If it is the first time that you are turning the camera on, the Try-Me demo video will start playing. Press the **Shutter** button to exit the Try-Me demo mode. The Try-Me demo will be disabled and will not play again.
- After the camera exits demo mode, first select your language and then set the date and time. Press up or down on the **D-pad** to select the correct day, month, year, hour and minute. Press left or right on the **D-pad** to jump to the previous or the next item. Finally, press the **OK** button to confirm the setting. If you wish to change the date and time later, you may do so in Settings.
- After the Try-Me demo mode has been disabled and you turn the camera on, the Camera mode preview screen will be activated and you can start taking photos.

- Press the **Home** button to go to the Main Menu to access other activities.
- Press the **On/Off** button again to turn the camera off.

## CARE & MAINTENANCE

1. Keep the camera clean by wiping it with a slightly damp cloth.
2. Keep the camera out of direct sunlight and away from any direct heat source.
3. Remove the batteries when the camera is not in use for an extended period of time.
4. Do not drop the camera on a hard surface and do not expose it to moisture or immerse it in water.

### SYSTEM REQUIREMENTS FOR COMPUTER CONNECTION:

Microsoft® Windows® 10 or above Operating System

macOS 10.13 or above

USB Port required

Microsoft® and Windows logos are trademarks of Microsoft Corporation in the United States and other countries. Macintosh and Mac logos are trademarks of Apple Inc. in the United States and other countries. All other trademarks are the property of their respective owners.

## WARNING

A very small percentage of the public, due to an existing condition, may experience epileptic seizures or momentary loss of consciousness when viewing certain types of flashing colours or patterns.

While **KidiZoom® Duo FX** does not contribute to any additional risks, we do recommend that parents supervise their children while they play games. If your child experiences dizziness, altered vision, disorientation, or convulsions, discontinue use immediately and consult your doctor. Please note that focusing on and handling a **KidiZoom® Duo FX** camera at close range as a game controller for a prolonged period of time may cause fatigue or discomfort. We recommend that children take a 15-minute break for every hour of play.

# CONSUMER SERVICES

Creating and developing **VTech®** products is accompanied by a responsibility that we at **VTech®** take very seriously. We make every effort to ensure the accuracy of the information, which forms the value of our products. However, errors sometimes can occur. It is important for you to know that we stand behind our products and encourage you to call our Consumer Services Department with any problems and/or suggestions that you might have. A service representative will be happy to help you.

## **UK Customers:**

Phone: 0330 678 0149 (from UK) or +44 330 678 0149 (outside UK)

Website: [www.vtech.co.uk/support](http://www.vtech.co.uk/support)

## **Australian Customers:**

Phone: 1800 862 155

Website: [support.vtech.com.au](http://support.vtech.com.au)

## **NZ Customers:**

Phone: 0800 400 785

Website: [support.vtech.com.au](http://support.vtech.com.au)

# PRODUCT WARRANTY/ CONSUMER GUARANTEES

## **UK Customers:**

Read our complete warranty policy online at [vtech.co.uk/warranty](http://vtech.co.uk/warranty).

## **Australian Customers:**

### **VTECH ELECTRONICS (AUSTRALIA) PTY LIMITED – CONSUMER GUARANTEES**

Under the Australian Consumer Law, a number of consumer guarantees apply to goods and services supplied by VTech Electronics (Australia) Pty Limited. Please refer to [vtech.com.au/consumerguarantees](http://vtech.com.au/consumerguarantees) for further information.

#### **Contact VTech**

Tel: 0330 678 0149 (from UK)  
+44 330 678 0149 (outside UK)  
1800 862 155 (Aus) / 0800 400 785 (NZ)  
**[www.vtech.co.uk](http://www.vtech.co.uk)**  
**[www.vtech.com.au](http://www.vtech.com.au)**